



Traffic Calming  
Yeomans Street

# WELCOME

Public Information Centre

*Investing in our Community*



# What is Traffic Calming?

---



Traffic calming is the deliberate slowing of traffic in residential areas via physical design and other measures to improve safety for motorists, pedestrians and cyclists.







## Speed Hump



✓ A raised area of a roadway, which deflects both the wheels and frame of a traversing vehicle. Properly designed speed **humps** are not to be confused with speed **bumps**, which are sometimes installed on private roadways and in parking lots and can be very abrupt and jarring to motorists.

Only properly designed speed humps are recognized within the Canadian guide to neighbourhood traffic calming.

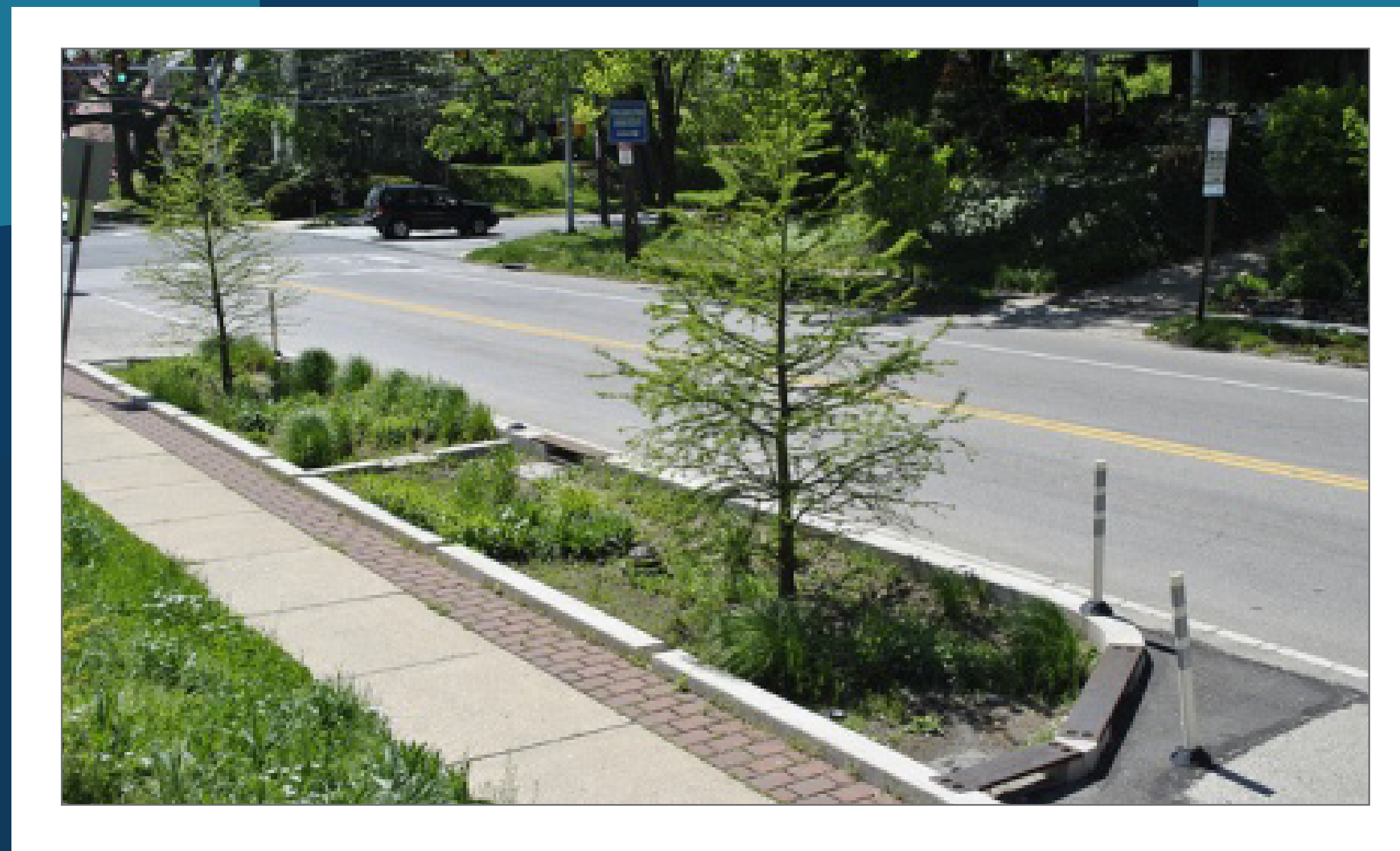
## Raised Crosswalk



✓ A marked pedestrian crosswalk at an intersection or mid-block location that is constructed at a higher elevation than the adjacent roadway.

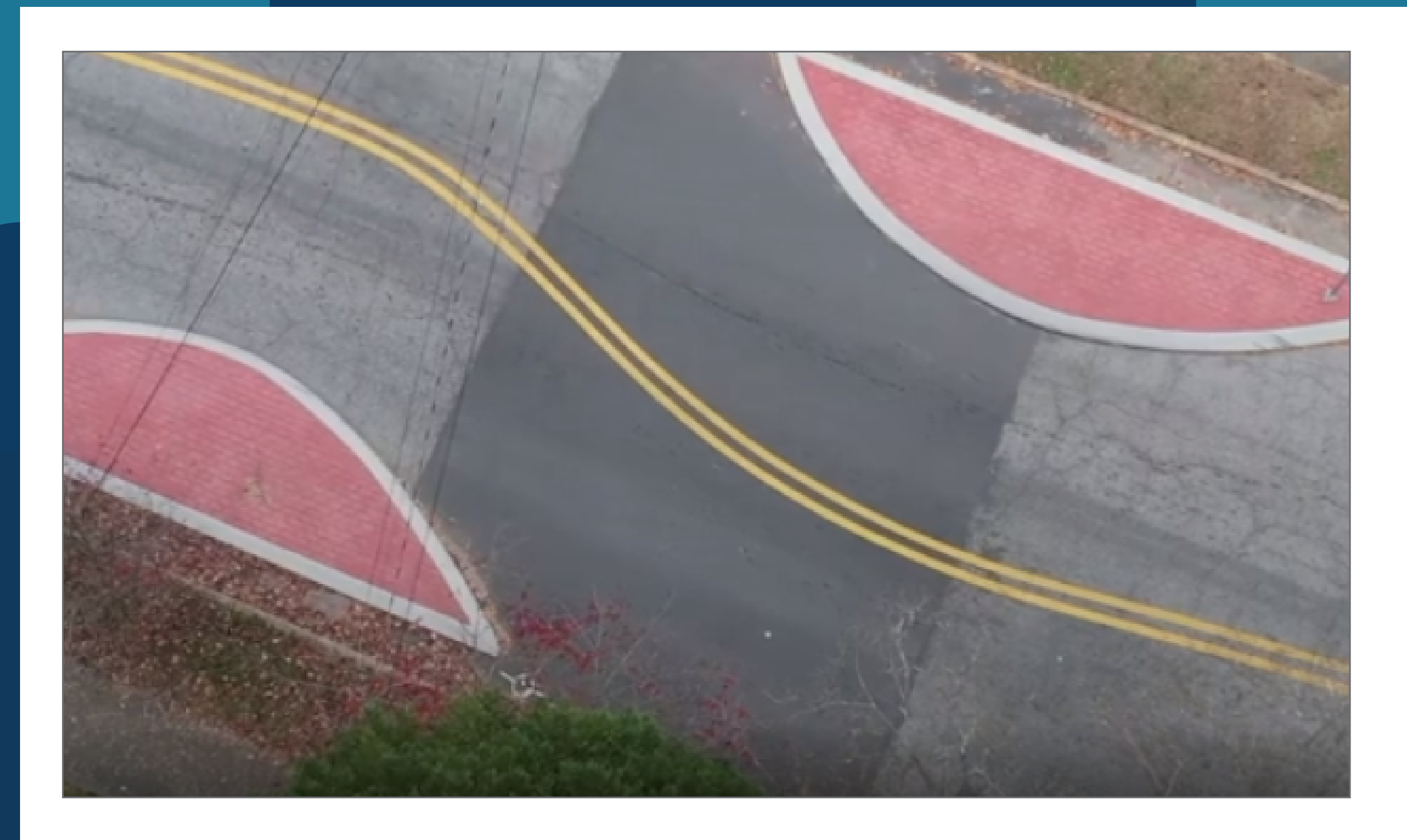


## Curb Extensions



A horizontal intrusion of the curb into the roadway resulting in a narrower section of roadway.

## Chicanes



A series of curb extensions on alternating sides of a roadway, which narrow the roadway and require drivers to steer from one side of a roadway to the other to travel through the chicane.

Typically, a series of at least three curb extensions are used.



## Flexible Bollards



Flexible delineator posts that reduce roadway width.

These posts are on springs so they will cause minimal damage to vehicles on impact.

## Rumble Strips



Raised buttons, bars or grooves closely spaced at regular intervals on the roadway that create both noise and vibration in moving vehicles.

## Pavement Marking



Lines painted onto the roadway with the intention of reducing lane width on both sides of the road.



## Raised Median Island



✓ An elevated median constructed on the centerline of a two-way roadway to narrow the roadway.

## Mini Roundabout



✓ A raised island located in the center of an intersection, which requires vehicles to travel through the intersection in a counter-clockwise direction around the island.



## Traffic Calming Measures

The following traffic calming measures were considered for Yeomans Street.

Measures	Carried Forward for Consideration	Screening Outcome
Speed Hump	<b>Yes</b>	Advanced to preliminary design
Raised Crosswalk	<b>No</b>	Not a permanent crossing within this section of road
Curb Extension	<b>No</b>	Not enough road width available
Chicane	<b>No</b>	Not enough road width available
Flexible Bollard	<b>Yes</b>	Advanced to preliminary design
Rumble Strip	<b>No</b>	Temporary measures typically used for construction
Pavement Marking	<b>No</b>	Confuse pavement marking with bike lanes
Center Median	<b>No</b>	Not enough road width available
Mini Roundabout	<b>No</b>	Inadequate required area at intersections

**Note:** Any implemented traffic calming measures will be removed for winter.



# Next Steps

Yeomans Street  
(Moira St. to Catharine St.)



Install ..... August 2023



Evaluation ..... Summer/Fall 2023



Removal ..... by November 1, 2023



An evaluation was completed considering the following criteria:



## Cost

- Initial
- Annual



## Emergency Services Impact

- Parking Restriction
- Green Space
- Aesthetics
- Noise
- Driveway Access



## Operational Impacts

- Collision with Traffic Calming Method
- Familiarity
- Vehicle Wear
- Compliance

Based on the evaluation criteria above, the recommended option is speed humps.