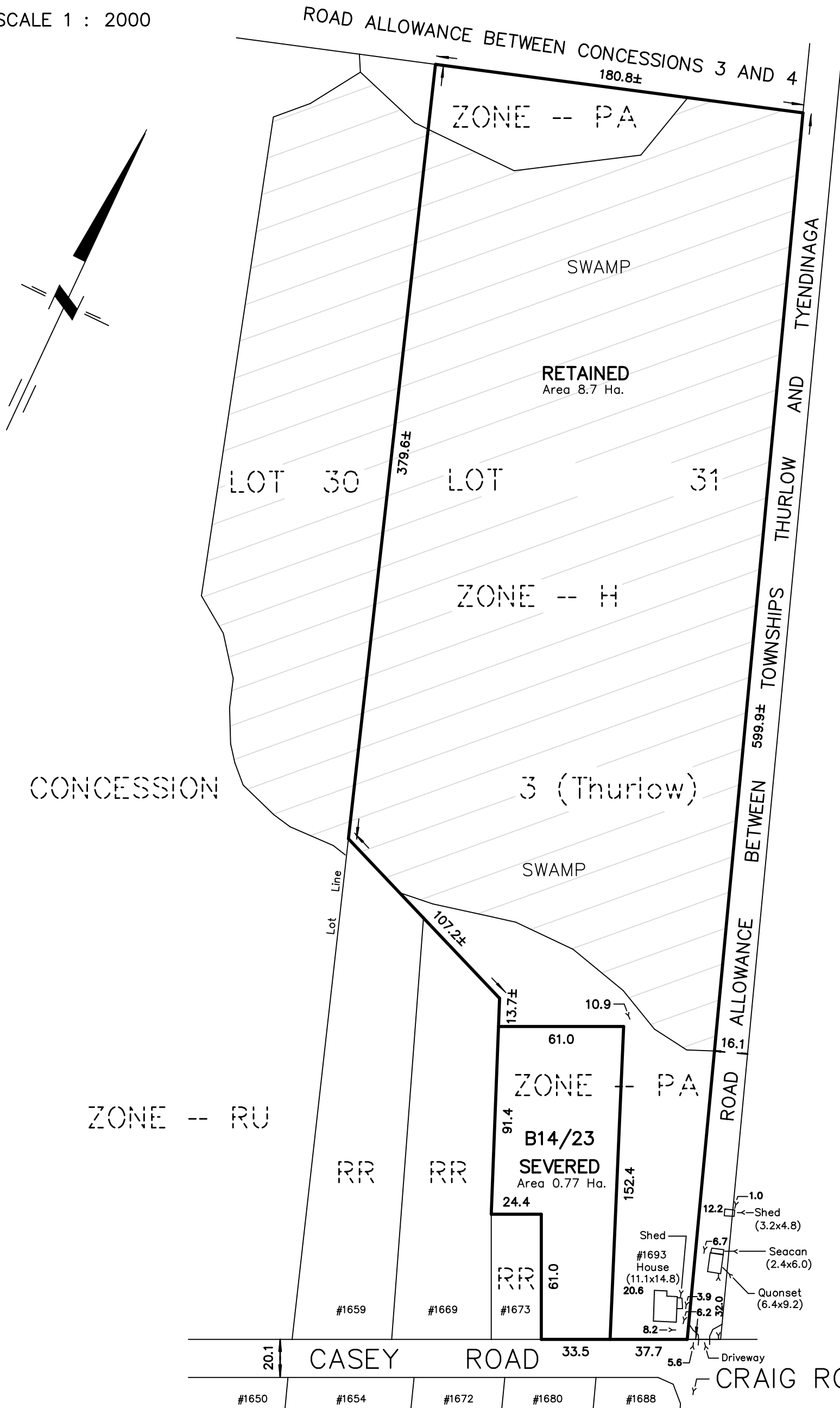


SKETCH for RE-ZONING APPLICATION

METRIC SCALE 1 : 2000



NOTES :

1693 CASEY ROAD
 PART OF LOT 31
 CONCESSION 3
 TOWNSHIP OF THURLOW
 NOW IN THE CITY OF BELLEVILLE
 COUNTY OF HASTINGS

DIMENSIONS AND INFORMATION SHOWN ARE DERIVED FROM PLANS
 21R-423, 21R-2756, 21R-19467 AND MUNICIPAL RESOURCES.

DISTANCES SHOWN ON THIS PLAN ARE IN METRES
 AND CAN BE CONVERTED TO FEET BY DIVIDING BY 0.3048.

THIS SKETCH IS AN ORIGINAL IF EMBOSSED BY THE SURVEYOR'S SEAL.

JANUARY 23, 2024

CAUTION

THIS IS NOT A PLAN OF SURVEY AND SHALL NOT BE USED
 EXCEPT FOR THE PURPOSE INDICATED IN THE TITLE BLOCK

218 CHURCH STREET BELLEVILLE, ONTARIO	WATSON LAND SURVEYORS Ltd.	K8N - 3C3 (613) 962 - 9521
--	--------------------------------------	-------------------------------